

CiRAY Data Sheet

CiRAY

High Output Full Range
3-way Passive
Line Array System



CiRAY is a compact, 3-way high output line array system offering both portability and power, plus stunning intelligibility for a range of applications.

CiRAY incorporates pioneering CODA Audio technologies. Featuring the Dual Diaphragm coaxial Planar wave driver (DDP) and CODA's proprietary coupler technology. CiRAY is highly efficient and provides a coherent and uniform wavefront with adjustable horizontal dispersion and linear phase response.

As with its big brother AiRAY, CiRAY breaks the rules of what is possible from a compact line array system. DAC technology allows the 10-inch drivers to provide the same power density per line array length at low frequencies as the AiRAY.

Further new technology includes a quick-release grille and Instafit magnetic coupler for even more control over horizontal dispersion. CiRAY is optimised so that three cabinets can be powered from one channel of a power amp, for even more convenience.

CiRAY is a fully-integrated sound reinforcement system including LINUS loudspeaker management amplifiers for DSP control, amplification, audio I/O routing, network remote control, and diagnostics, significantly reducing setup time. Requiring far less truck space than anything else on the market, CiRAY also has a range of touring accessories including dollies, covers, and more. The integrated three-point rigging system allows quick and easy flying or ground stacking, and the horizontal coverage is variable, allowing you to choose the perfect coverage for your venue.

CiRAY can be deployed with the other members of the VCA family, AiRAY and ViRAY, as well as SCP/SCP-F, SCV-F subwoofers or SC2-F bass extension down to 25 Hz.

CiRAY Features

- ⊕ Linear phase response
- ⊕ Frequency range: 50 Hz – 22 KHz (-6 dB)
- ⊕ High power handling: 1400 W (AES)
- ⊕ DDP generates a unified wavefront and operates at a very high efficiency with extremely low distortion
- ⊕ DAC technology means more power from smaller enclosures with better dissipation
- ⊕ CiCOUPLER, Instafit Magnetic to change dispersion pattern without tools (60°, 90°, 120° or asymmetrical)
- ⊕ Acoustically and rigging compatible with AiRAY and ViRAY line arrays
- ⊕ Integrated 3-point rigging for flown or ground-stacked arrays
- ⊕ System integration with LINUS DSP Amplifiers

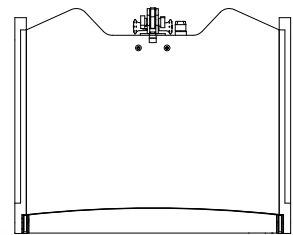
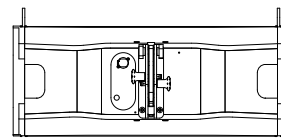
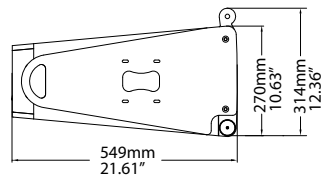
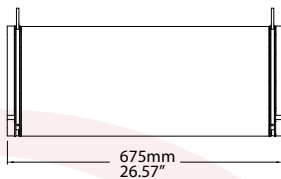


CiRAY Data Sheet



Product type:	High output, full range 3-way passive line array system
Frequency response:	50 Hz – 22 kHz (-6 dB)
Power handling AES2 / peak (passive):	1400 W / 5600 W
Max. peak SPL*:	145 dB**
Amplification, cabinets per amplifier (Optimum / Maximum):	12 / 16
Dispersion horizontal:	60°, 90°, 120° or asymmetrical
Dispersion vertical:	Array dependent: 0.5°, 1°, 2°, 2.5°, 3° to 10° in 1°-steps
Components Low frequency:	2x 10" Nd woofer, 3" VC (77mm), 700 W (AES)
Components Mid/High frequency:	8.75" DDP MF: 3.5" (90 mm) VC, 150 W (AES) HF: 1.75" (44.4mm) VC, 80 W (AES)
Crossover point:	560 Hz passive, 6.3 kHz passive
Input connectors:	2x Neutrik™: 1x NLT4M + 1x Link cable with Neutrik 4 pole connector
Nominal impedance LF / MF+HF:	12 Ω (2+/2-)
Enclosure material:	Hybrid Birch Plywood/Aluminium
Finish:	Polyurea coating
Suspension:	Flying hardware integrated
IP rating options (IEC 60529):	Standard IP54
Weatherproof protection options:	Standard IP55: IP55 (Amphenol connectors) MG1 (Marine Grade 1): IP55
Dimensions (WxHxD):	675 x 270 x 549 mm / 26.57 x 10.63 x 21.61" (675 x 314 x 551 mm / 26.57 x 12.36 x 21.69" incl. hardware)
Net weight:	29.3 kg / 64.6 lbs

** Measured with pink noise 12 dB Crest Factor. (A-weighted).



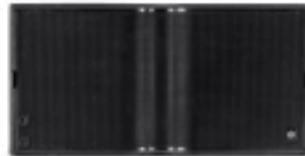
Other CiRAY System Products



SCV-F
Compact 18" Subwoofer
with SC Technology



SC2-F
Dual 15" Bass Extension
with SC Technology



SCP-F
High Output Dual 18" Subwoofer
with SC Technology



LINUS T-RACK
12-Channel Touring Rack

CODA AUDIO GmbH

Boulevard der EU 6, 30539 Hannover, Expo Park, Germany
E-Mail: contact@codaaudio.com Website: www.codaaudio.com

CODA
CODA AUDIO

