

RACK-UP® SERIES

Models RU-BNF & RU-BNFP

Format-A Bi-Directional Network Interface

- Converts RDL Format-A and Aux Source to Four Dante Network Channels
- Easy Installation with Format-A Connections on RJ45 through CATx Cable
- Format-A Audio Sources from Pairs A, B and C Converted to Dante
- Fourth Dante Audio Channel Fed from Unbalanced or Balanced Aux Line Input
- Front-Panel Gain Adjustment with Dual-LED VU Meter for Aux Input
- Signal LEDs Indicate Audio for Each of the Three Audio Source Format-A Pairs
- Converts Four Dante Network Audio Signals to RDL Format-A and Aux
- Three Dante Audio Signals Feed Format-A Output Pairs A, B and C
- Fourth Dante Audio Signal Feeds Auxiliary Balanced +4 dBu Line Output
- Format-A Pairs are Distributed to Three Separate Format-A Output Jacks
- Signal LEDs Indicate Audio for Each of the Four Received Dante Audio Signals
- External 24 Vdc Supply Powers All Connected Format-A Modules through RJ45 Jacks
- PoE (RU-BNFP) Powers Format-A Input and Primary Format-A Output RJ45 Jacks
- High Resolution 24 Bit Analog to Digital and Digital to Analog Conversion
- Legendary RDL Analog Filtering Enhances Superb Audio Performance
- LED Indicators Show Network Sync Status
- Normal or Hot-Standby Operation from PoE (Model RU-BNFP)
- Compatible with Wide Array of RDL Format-A Active and Passive Senders and Receivers
- Equipped for Rack Mounting or Surface Mounting



The RU-BNF modules are Dante audio network interface products compatible with RDL Format-A twisted pair products. These modules are designed to be mounted in equipment racks, closets, conference tables and on shelves or backboards in commercial/industrial installations.

APPLICATION: The RU-BNF is an RDL Format-A sender/receiver that connects to a Dante-enabled network, providing all the features of an RDL RU-FN Format A to Network Interface and an RU-NFD Network to Format-A Interface/Distributor.

Network to Format-A Interface/Distributor Section

The RU-BNF converts three Dante audio channels to RDL Format-A. Each network channel corresponds to Pair A, B or C of the Format-A outputs. The unit converts a fourth Dante audio channel to a balanced line-level AUX output. One front-panel green signal LED corresponds to each of the four Dante input channels. Received audio level is indicated on the variable-intensity LED indicator, facilitating setup when a networked computer is not connected at the module's location.

The Format-A output is distributed to three separate rear-panel RJ45 jacks. Each Format-A output jack provides up to 200 mA of power to connected Format-A receivers. Multiple receivers may be daisy chained from one output jack, or may be connected by home run to each of the three outputs. Higher current Format-A receivers, such as RDL D-PSP1A powered Decora-style speakers, are to be individually connected to a separate output jack.

The RU-BNF output jacks support the entire range of Format-A receivers, making each output pair available for end-user connection on various wall plates, or feeding other equipment using rack-mounted, shelf-mounted or utility Format-A receivers. The wide array of Format-A receivers provide compatibility with commercial audio equipment operating at standard professional levels. High resolution digital audio converters coupled with RDL's renowned analog filters provide superior fidelity with a very low noise floor. Each Format-A receiver may be connected near the RU-BNF or up to several thousand feet distant.

Format-A to Network Interface Section

The RU-BNF converts the three Format-A audio pairs to Dante networked digital audio channels. Each network channel corresponds to Pair A, B or C of the Format-A input. The unit converts a fourth input, balanced or unbalanced line-level AUX, to Dante.

One front-panel green signal LED corresponds to each of the three Format-A input channels. Received audio level is indicated on the variable-intensity LED indicator, facilitating setup when a networked computer is not connected at the module's location. A Dual-LED VU meter facilitates adjustment of the front-panel AUX input gain control. The AUX input supports the complete range of normal unbalanced and balanced line-level sources.

The Format-A input jack provides up to 200 mA of power to connected Format-A senders. Multiple senders may be daisy chained from the Format-A input jack.

The RU-BNF Format-A input supports the entire range of Format-A senders, making each input pair available for end-user connection on various wall plates, or receiving signals from other equipment using rack-mounted, shelf-mounted or utility Format-A senders. The wide array of Format-A senders provides compatibility with commercial audio equipment operating at standard professional levels. High resolution digital audio converters coupled with RDL's renowned analog filters provide superior fidelity with a very low noise floor. Each Format-A sender may be connected near the RU-BNF or up to several thousand feet distant.

The RU-BNF is powered from an external 24 Vdc power supply, available separately. The external supply powers the RU-BNF, Format-A senders connected to the Format-A input jack and Format-A receivers connected to all three Format-A outputs. The RU-BNFP is equipped for PoE which powers the RU-BNF, Format-A senders connected to the Format-A input, and Format-A receivers connected to the primary Format-A output jack. Audio is also distributed to the other two output jacks. Remote Format-A receivers connected to those other two output jacks are only powered from the RU-BNFP if an external 24 Vdc power supply is connected. If PoE power and an external 24 Vdc supply are both feeding an RU-BNFP, the unit will run from the external supply and will seamlessly switch over to PoE power upon loss of the external 24 V supply. The power feeding each Format-A RJ45 connector is separately protected by an automatically resetting fuse. A power LED is associated with each connector, facilitating identification of wiring faults.

PoE relies on the use of a PoE enabled network switch. The RU-BNF will reserve power from the switch even while being powered from an external 24 Vdc supply.

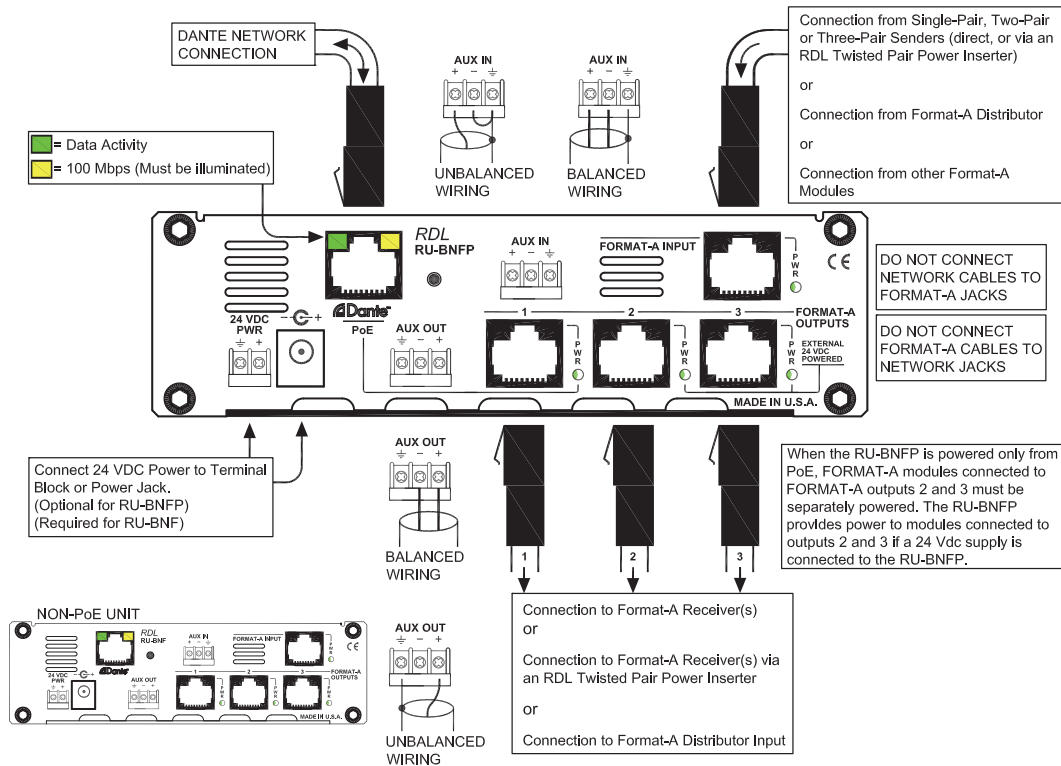
The RU-BNF is constructed in a durable, professional all-metal enclosure suitable for free-standing, surface-mounted or rack-mounted operation. This full-featured product is engineered and manufactured in the U.S.A for continuous duty in demanding installations. Built to last. Built to outperform.



RACK-UP[®] SERIES Models RU-BNF & RU-BNFP Format-A Bi-Directional Network Interface

Installation/Operation

CE Declaration of Conformity available from rdlnet.com.
Sole EMC specifications provided on product package.
Specifications are subject to change without notice.



TYPICAL PERFORMANCE

Network Connector:	RJ45 with Link and Speed indicators
Digital Audio Ethernet Protocol:	Dante
Transmission Rate:	100 Mbps
Sample Rates Supported:	44.1 kHz, 48 kHz (default)
Bit Depth Supported:	24 bits
Audio Operating Levels:	-20 dBFS = +4 dBu

Format-A to Network Interface Section

Format-A Input	RDL Format-A RJ45
Format-A Signal Pairs Used (3):	A, B, C
Frequency Response:	20 Hz to 20 kHz (± 0.5 dB)
THD+N:	< 0.1%
Noise below +4 dBu:	< -75 dB
CMRR:	> 90 dB (50 to 120 Hz, any input pair)
Crosstalk:	> 80 dB (20 Hz to 20 kHz)
Headroom above +4 dBu:	> 18 dB

AUX Input

Input:	Balanced, detachable terminal block
Input Impedance:	> 20 kΩ
Input Level for +4 dBu:	-16 dBu to +12 dBu, +22 dBu maximum
Frequency Response:	20 Hz to 20 kHz (± 0.75 dB)
THD+N:	< 0.1%
Noise below +4 dBu/-18 dBFS:	< -75 dB
CMRR:	> 60 dB (50 to 120 Hz)
Crosstalk:	< 80 dB (20 Hz to 20 kHz)
Headroom above +4 dBu:	> 18 dB

Network to Format-A Interface/Distributor Section

Format-A Outputs	RDL Format-A RJ45 (3)
Format-A Signal Pairs Used (3):	A, B, C (each Format-A output)
Frequency Response:	20 Hz to 20 kHz (± 0.75 dB)
THD+N:	< 0.1%
Noise below +4 dBu:	< -85 dB (pair active); < -100 dB (pair muted)
Crosstalk:	< 80 dB (20 Hz to 20 kHz)
Headroom above +4 dBu:	> 18 dB

AUX Output

Output:	Balanced, detachable terminal block
Output Level:	+4 dBu (nominal)
Output Impedance:	150 Ω balanced; 75 Ω unbalanced
Frequency Response:	20 Hz to 20 kHz (± 0.5 dB)
THD+N:	< 0.1%
Noise below +4 dBu:	< -75 dB
Crosstalk:	< 80 dB (20 Hz to 20 kHz)
Headroom above +4 dBu:	> 18 dB

Indicators (18):

Power In (1):	Power Out (4); Audio Signal LEDs (7);
AUX Dual-LED VU Meter (2);	Network Sys and Speed (2),
Ethernet Link and Speed (2)	
Power Connections (2):	Power Jack; Detachable Terminal Block
Ambient Operating Environment:	0° C to 40° C
Power Requirement:	24 Vdc @ 150 mA plus connected loads, or PoE (RU-BNFP)

PoE (RU-BNFP):

Dimensions:	5.8" (15 cm) W; 1.7" (4.3 cm) H; 5.2" (13.2 cm) D
Package Type:	Cardboard Box
Package Dimensions:	6 x 6 x 2.625 in.
Shipping Weight:	1.72 lbs. (RU-BNF); 1.745 lbs. (RU-BNFP)
WEEE weight:	1.46 lbs. (RU-BNF); 1.485 lbs. (RU-BNFP)
Tariff code:	8517.18.0050

Radio Design Labs Technical Support Centers

U.S.A. (800) 933-1780, (928) 778-3554; Fax: (928) 778-3506
 Europe [NH Amsterdam] (+31) 20-6238 983; Fax: (+31) 20-6225-287